

# HSB-1 LABORATORY HEAT SEALER

LABORATORY HEAT SEALER FOR STANDARD DETERMINATION OF HEAT SEAL THRESHOLD. PRODUCES SEALS 5 TO 25MM WIDE AND UP TO 300MM LONG.

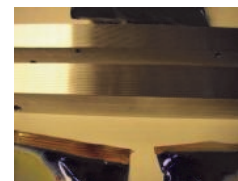


#### Benefits:

- Choose heat sealing bar configuration, either single (upper) or dual (upper & lower, meets ASTM F2029)
- User can easily change sealing bar for various surface areas or surface finishes
- Accurate and repeatable seals due to precision ground sealing faces and jaw guidance system
- Versatile applications for flexible materials, blister packs and pots
- Low Maintenance - 12 months between calibrations

#### Features:

- Pressure calibration of standard surface area jaw face
- Temperature digital controllers, pressure and dwell time dial controllers (upgrade to precision digital controllers as required)
- Jaws constructed in aluminium and silicon with precision ground faces
- Range of jaw face surfaces including Matched Crimp and Teflon Coating



Sealing Bars- Flat



Sealing Bars - Crimp



RDM Test Equipment  
Unit 39 Golds Nurseries Bus. Park  
Jenkins Drive, ELSENHAM  
Hertfordshire, CM22 6JX, UK

# Specification

Seal Width	300 mm max. (Option to extend to 350mm)
Temperature Control	Range: Ambient to 300°C, Accuracy: +/- 0.5%, Operating Accuracy: +/-2°C. Single (Upper) sealing jaw temperature control, or Dual (Upper & Lower) sealing jaw temperature control
Pressure	Range: 0 to 100psi (6.8bar, 689Kpa), via dial pressure gauge, pressure control via precision regulator. Operating Accuracy +/- 10%, Repeatability +/- 5psi . Supply via clean and dry compressed airline or bottled air/nitrogen at 90 to 100psi
Dwell Time	Range: 0.1 to 99.9 sec., Resolution 0.01 sec
Jaw Guidance System	Quick release mechanism for simple jaw changeover.
Sealing Jaws	Standard flat jaws 25mm x 300mm, constructed in aluminium with precision ground face. Lower sealing jaw with precision ground silicone rubber face. (See options below)
Environment:	5-50C ambient operating temperature, RH 75% max (non-condensing)
Power	240V AC 50/60 Hz (110V AC voltage available on request)

# Options

- Single (Upper) sealing jaw temperature control or Dual (Upper & Lower) sealing jaw temperature control
- Sealing jaw dimension/profile as required (inc. Matched crimp 120° x 1.8mm pitch)
- Upgrade to digital pressure transducer/readout, and digital dwell timer.
- Stainless Steel sealing jaws
- Teflon Coated Tape or Teflon Coated Jaws
- Footswitch
- PVC Dust Cover
- Alarm package for temperature High/Low, selectable
- Cold seal system
- Digital thermometer with s/s band probe to check jaw temperature (see image)

