

HSM-4 MINI BAR HEAT SEALER



The satisfactory development, manufacture, conversion and application of flexible packaging films necessitates the implementation of precise methods of quality control systems.

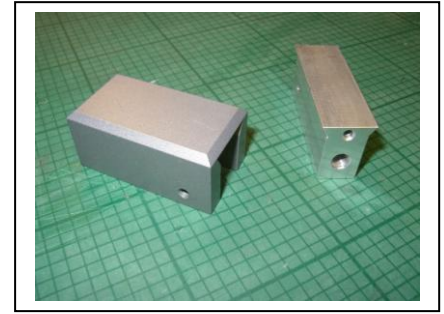
The HSM-4 was developed to precisely control the parameters essential in determining the heat seal threshold.

Especially suited for flexible packaging materials, laminates, foils and paper, the HSM-4 features accurate control of temperature, pressure and dwell time of a standard surface area sealing jaw.

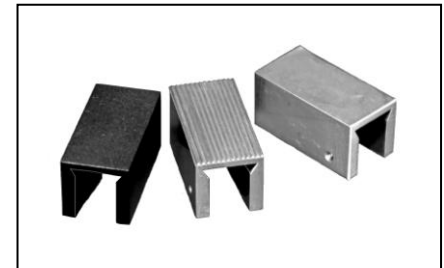
With the introduction of a standard test method ASTM F2029-00 and our heat sealer HSM-4, you can be confident that your heat seal threshold measurement is common to all producers, converters and end users of flexible packaging materials and their eventual applications.

Meets ASTM F-2029-00 (only when top/lower jaw heated)

The HSM-4 also features a unique method of quick change over jaws, the machine employs a slide-on jaw arrangement. The machine comes with dovetailed blank heater blocks, in single or dual option, where standard flat ground surface slide-on jaw is supplied. When profiled crimp sealing surface is needed, mating dovetailed slide-on jaw are replaced very easily.



Ground flat sealing jaw with blank and dovetail mating



Crimped profile sealing jaws matching pair. Normal size 25mm x 50mm but can be anywhere from 5mm up to 25mm wide x 50mm long.



Thermometer and s/s band surface probe to check jaw temperatures.

SPECIFICATION:

Temperature Control:	0 - 300°C (0 - 572°F) 0.1°C resolution +/- 0.5% +/- 1 digit accuracy. Operating temperature accuracy +/- 2°C. Resistance Type 'J' thermocouple sensing. Single independent or dual independent control
Pressure:	0 - 100psi (0 - 6.8 bar, 0 - 689 Kpa) via dial pressure gauge. Pressure control through precision regulator. Repeatability +/-5.0 PSI Operation accuracy +/- 10% Supply via factory compressed air line or nitrogen or compressed air bottles min 6 bar (90 psi) max. 7 bar(100 psi). Pressure medium must be clean and dry.
Dwell Time:	0.1 - 99.9 sec. 0.1 sec resolution real time base via quartz crystal +/- 0.5% of range. Operating accuracy +/- 10% (taking into account friction in piston movement).
Footswitch:	Connection port for footswitch operation. Optional footswitch.
Sealing Jaw Std:	Single jaw option: Top heated with silicone rubber (60 shore hardness) 5mm - 25mm wide x 50mm long. Jaws made from aluminium with machine ground flat face. Dual jaw option: Top and Lower heated 5mm -25mm wide x 50mm long. Jaws made from aluminium with machine ground flat face.
Power:	240V AC 50/60 Hz (110V AC voltage available on request)
Option:	Footswitch PVC Dust cover Up-grade to digital dwell timer. Crimp profiled slide-on jaws 120 deg x 1.8 mm pitch. Cold Seal Option (temperature circuit removed) supplied with flat or crimp profiled jaws. Teflon coated tape or permanent Teflon coating Digital thermometer and s/s band probe to check the actual temperatures of sealing Jaw.